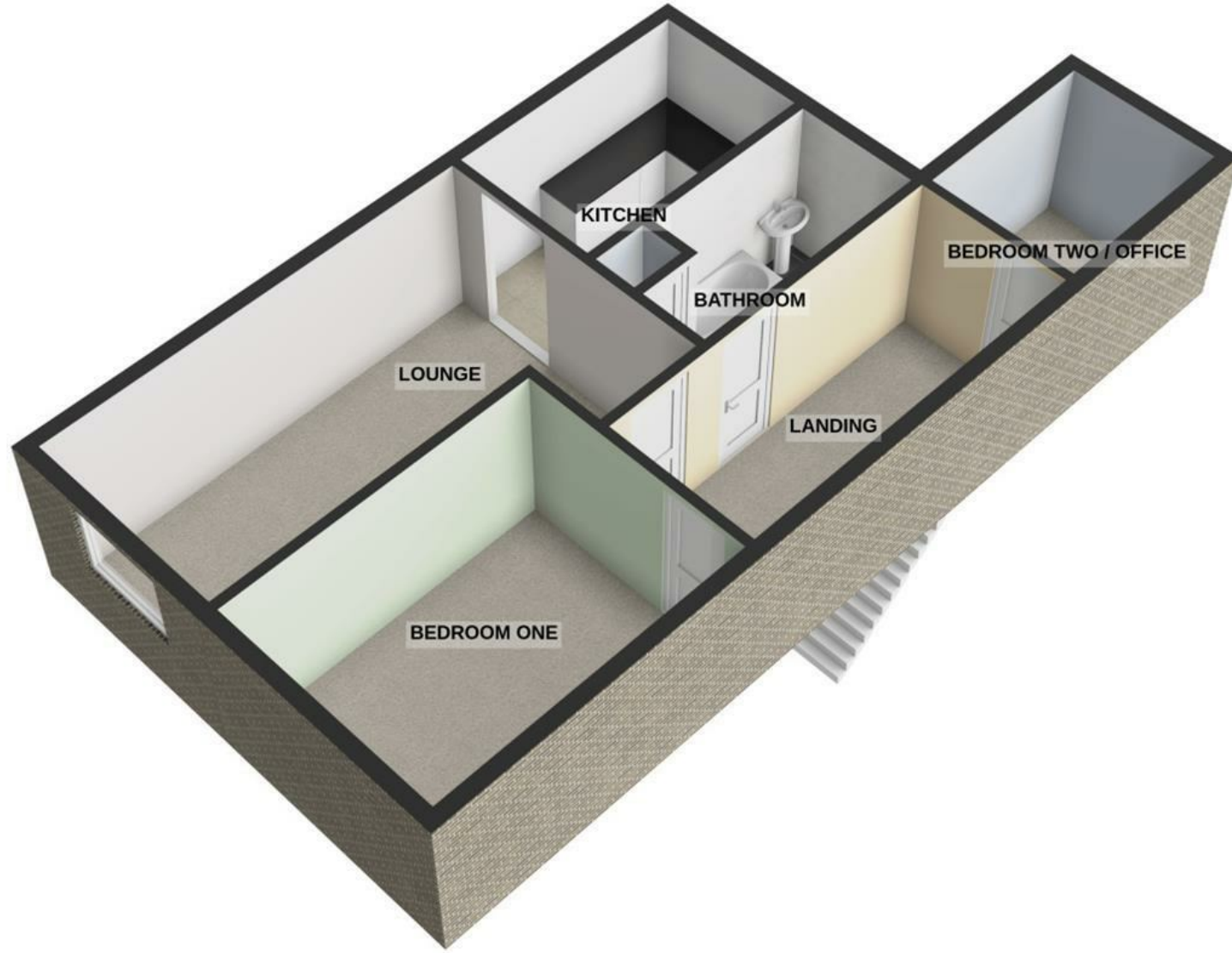


SECOND FLOOR  
50.4 sq.m. (542 sq.ft.) approx.



For illustrative purposes only. Decorative finishes, fixtures, fittings and furnishings do not represent the current state of the property. Measurements are approximate. Not to scale. Made with Metropix © 2025



**ST. ALBANS ROAD, LYTHAM ST. ANNES  
FY8 1XD**

**ASKING PRICE £79,950**

- WELL PRESENTED SECOND FLOOR CONVERTED APARTMENT IN HIGHLY CONVENIENT LOCATION - NO CHAIN
- TWO BEDROOMS - LOUNGE - THREE PIECE BATHROOM - KITCHEN
- CLOSE TO LOCAL SHOPS, TRANSPORT LINKS, ST ANNES TOWN CENTRE AND SEA FRONT
- OFF ROAD PARKING SPACE - EPC RATING: D - PERFECT FOR A BUY TO LET INVESTOR OR FIRST TIME BUYER



We take every care to ensure that details shown are correct, however, complete accuracy cannot be guaranteed and is expressly excluded from any contract. The information contained herein is for general guidance only. Unless otherwise stated, the condition of the heating system, electrical appliances and any fittings in the sale are not known and have not been tested by County and Commercial properties Ltd. We therefore cannot offer any guarantees in respect to them.



7 Orchard Road, Lytham St. Annes, Lancashire FY8 1RY  
T 01253 711511 F 01253 711515 E info@countystateagentsltd.com





### Communal Entrance

Entrance gained via composite door which leads into;

### Entrance Vestibule

Entry door system, decorative tiled flooring, cupboard housing the meters, door leading into;

### Communal Hallway

Wood effect laminate flooring, coving, stairs leading up to the first floor landing.

### Entrance To Flat 3

Wooden door leading into flat 3.

### Entrance Vestibule

Wood effect laminate flooring, stairs leading up to the second floor landing.

### Second Floor Landing

Split level landing with Velux window to the side, cupboard housing the fuse box, wall mounted electric panel heater, loft hatch, doors to the following rooms;

### Bedroom Two / Office

10' x 5'

Velux window to the side, wood effect laminate flooring, spotlight.

### Bathroom

9'8 x 4'11

Three piece white suite comprising of; bath with overhead electric shower, pedestal wash hand basin and WC, part tiled walls, cupboard housing immersion tank which also provides storage space, vinyl flooring, wall mounted electric panel heater, wall mounted mirror, Velux window to the rear.

### Bedroom One

14' x 7'6

Large Velux window to the front, wood effect laminate flooring.



### Lounge

17'2 x 9'6

UPVC double glazed window to the front, marble effect hearth housing freestanding electric living flame effect fire, television and telephone points, wood effect laminate flooring. The lounge opens up to;

### Kitchen

10'1 x 5'7

Good range of wall and base units, laminate work surfaces, stainless steel sink and drainer, tiled to splash backs, overhead illuminated 'Neff' extractor hood, space for fridge freezer, plumbed for washing machine, two Velux windows to the rear, vinyl flooring.

### Other Details

Tenure: Leasehold - approximately 845 years remaining

Council Tax Band: A

